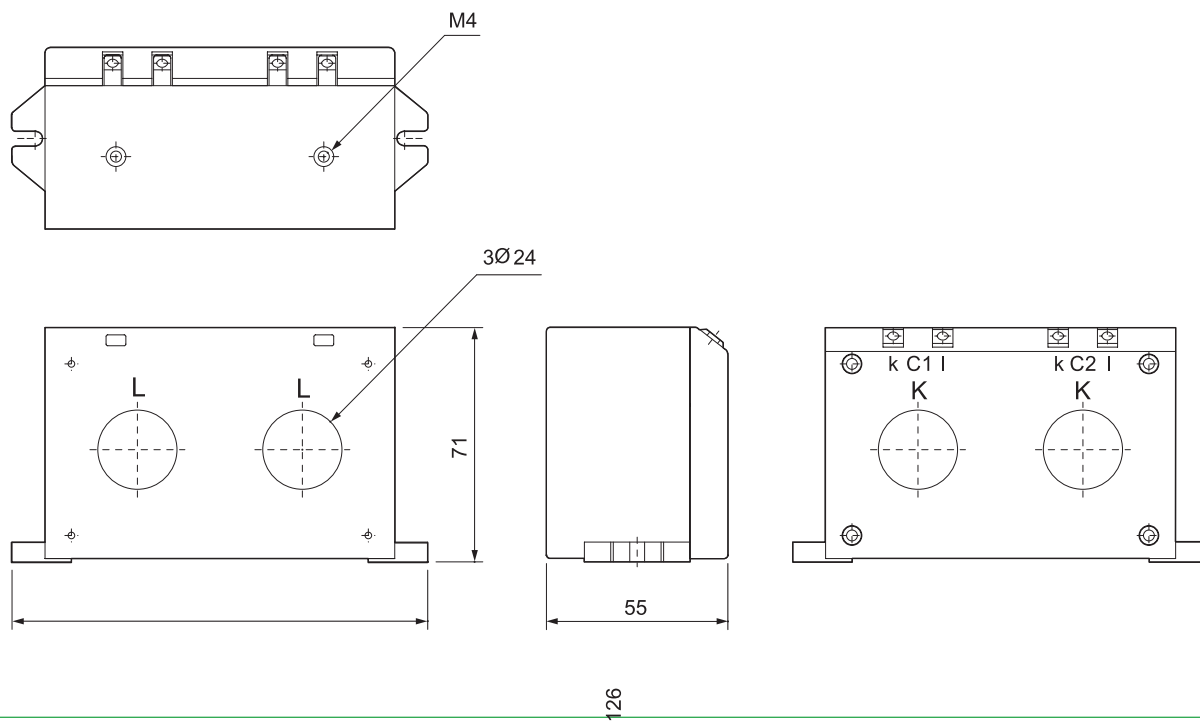
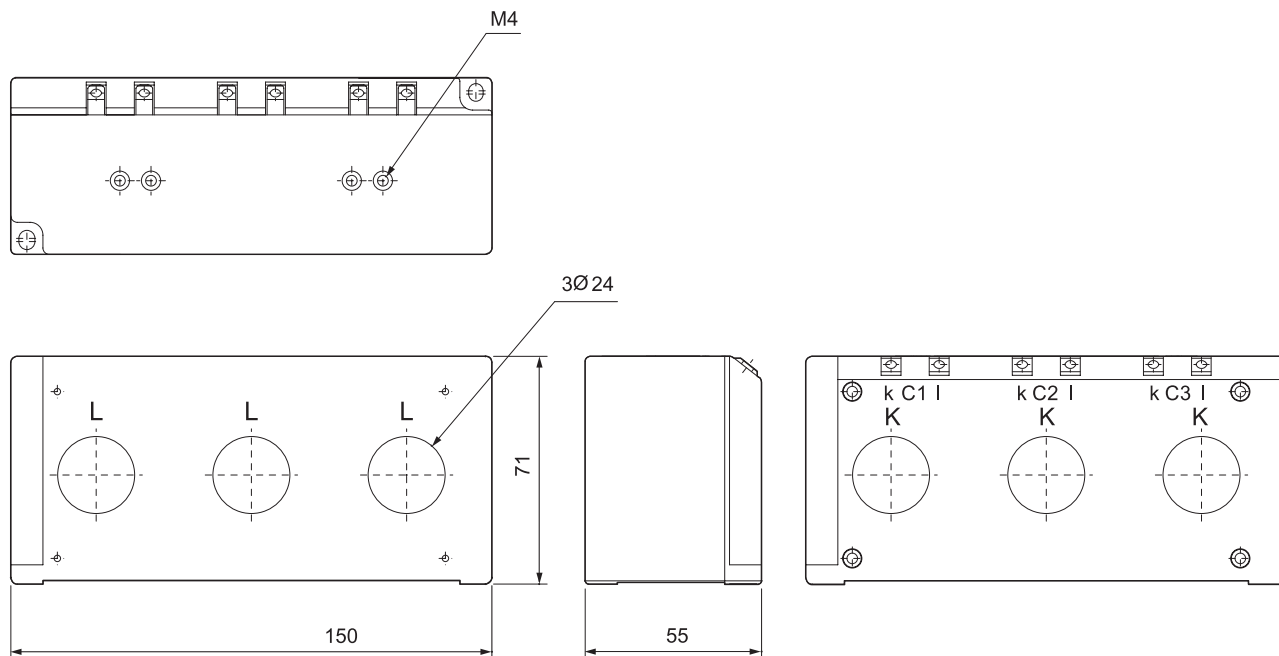
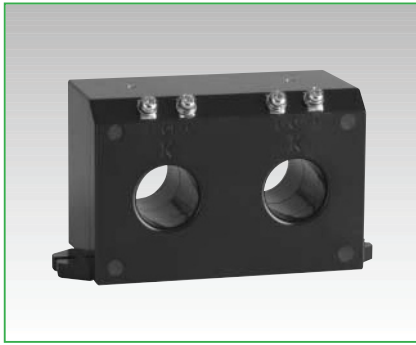


■ 2CT



■ 3CT





2CT



3CT

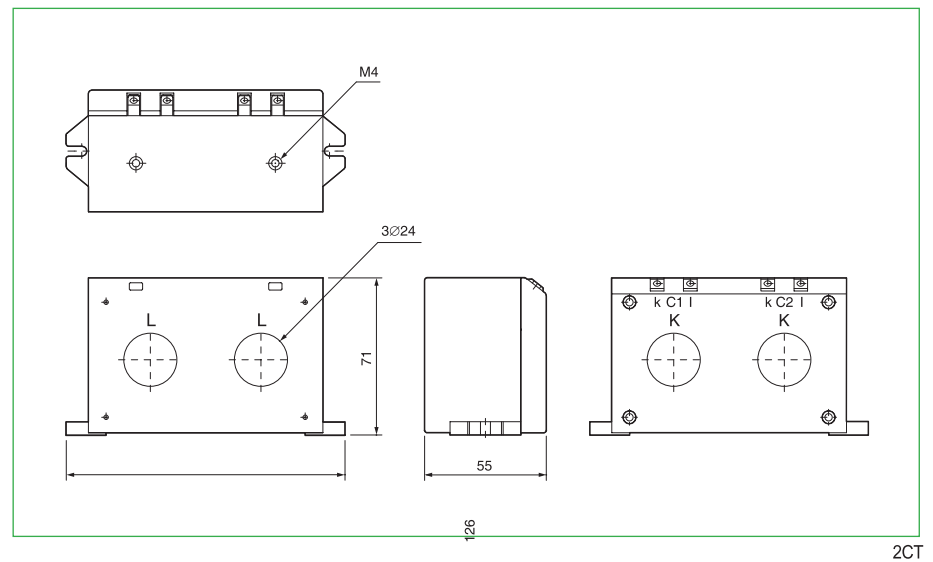
■EOCR(정한시성)의 대용량 부하 보호시 조합사용

정격사양

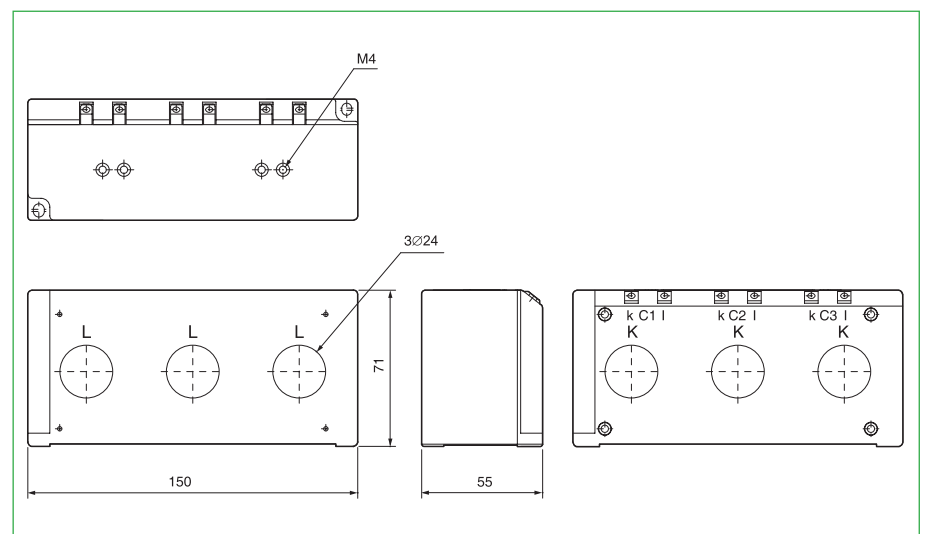
| 모델명 | | 2CT | 3CT |
|------|-----|---------------------|---------------------|
| 변류비 | 100 | 100 : 5A | 100 : 5A |
| | 150 | 150 : 5A | 150 : 5A |
| | 200 | 200 : 5A | 200 : 5A |
| | 300 | 300 : 5A | 300 : 5A |
| | 400 | 400 : 5A | 400 : 5A |
| 등급 | | 1.0 | 1.0 |
| 부담 | | 5VA | 5VA |
| 절연전압 | | AC600V | AC600V |
| 절연내압 | | 2kV | 2kV |
| 절연저항 | | 10MΩ(DC500V Megger) | 10MΩ(DC500V Megger) |
| 취부 | | Panel | Panel |

※ 부담은 Metering Class에 기준함

※ 이 CT들은 EOCR 이외의 용도로 사용하지 마십시오.



2CT



3CT